

PROCUREMENT NOTICE

REQUEST FOR QUOTATION (RFQ)

Contract Title: 1.1.3 Support HHs to construct transitional shelter in collaboration with Jhapa Rural Municipality

Ref No.:	3/2026
Procurement Number:	Flood Recovery-3-26
Issued Date:	February 22, 2026
Submission Deadline:	March 10, 2026
Quotation Submission Method:	Quotation can be submitted electronically at procurement.snjd@gmail.com with a password-protected attachment or sealed quotation hard copy at SNJD office, Birtamode, Jhapa
Purchaser:	Social Network for Justice & Development (SNJD), Flood Recovery Project
Description:	<ul style="list-style-type: none">• Construction of Nine (9) Transitional Shelters in Jhapa Rural Municipality• Estimated Amount (including VAT): NPR 1,996,748.89 <i>Detailed specifications and requirements are provided in the Bill of Quantities (BOQ).</i>

Quotation Submission Method:

Interested bidders may submit their quotations through either of the following methods:

1. **Electronic Submission:**

Email the quotation to **procurement.snjd@gmail.com** with a **password-protected attachment**. The password should be shared separately upon request.

2. **Hard Copy Submission:**

Submit a **sealed quotation** to the SNJD Contact Office, Birtamode, Jhapa.

Eligibility / Required Documents:

Interested bidders must submit the following documents along with their quotation:

- Firm Registration Certificate
- VAT/PAN Registration Certificate
- Latest Tax Clearance Certificate

Note: Refer to BOQ for more details informations.

Interested suppliers are requested to submit their quotations along with all required supporting documents by the deadline mentioned above. Late submissions will not be considered.

All applicants must comply with SNJD's Code of Conduct, Child Safeguarding Policy, and Safeguarding Policy for Prevention of Sexual Exploitation and Abuse. SNJD strictly adheres to a zero-tolerance policy regarding child labor.



Social Network for Justice & Development (SNJD)

Kachankawal-06, Baniyani, Jhapa, Nepal

Contact Office: Birtamode, Jhapa, Nepal

Contact No. +977 9814061142

SOCIAL NETWORK FOR JUSTICE & DEVELOPMENT (SN-JD)

Kachankawal-06,Baniyani,jhapa

BOQ

Project Name :-

Flood Recovery Support For Affected and Dispalce household

Project Location :-

Jhapa Rural Municipality-01 & 02

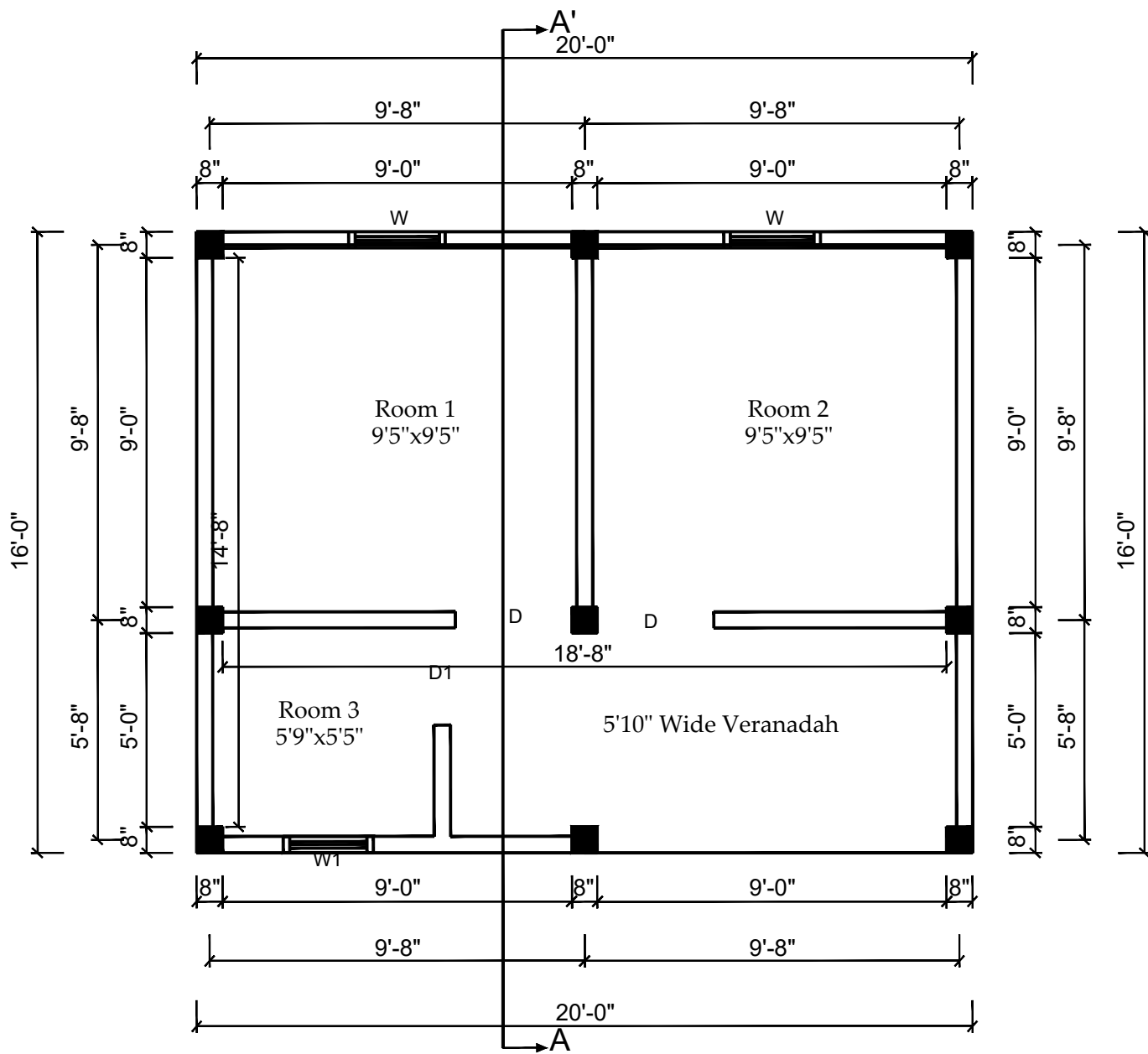
Activity Name :-

Support HHS To Construct Transitional Shelter in Colloboration with Jhapa Municipality

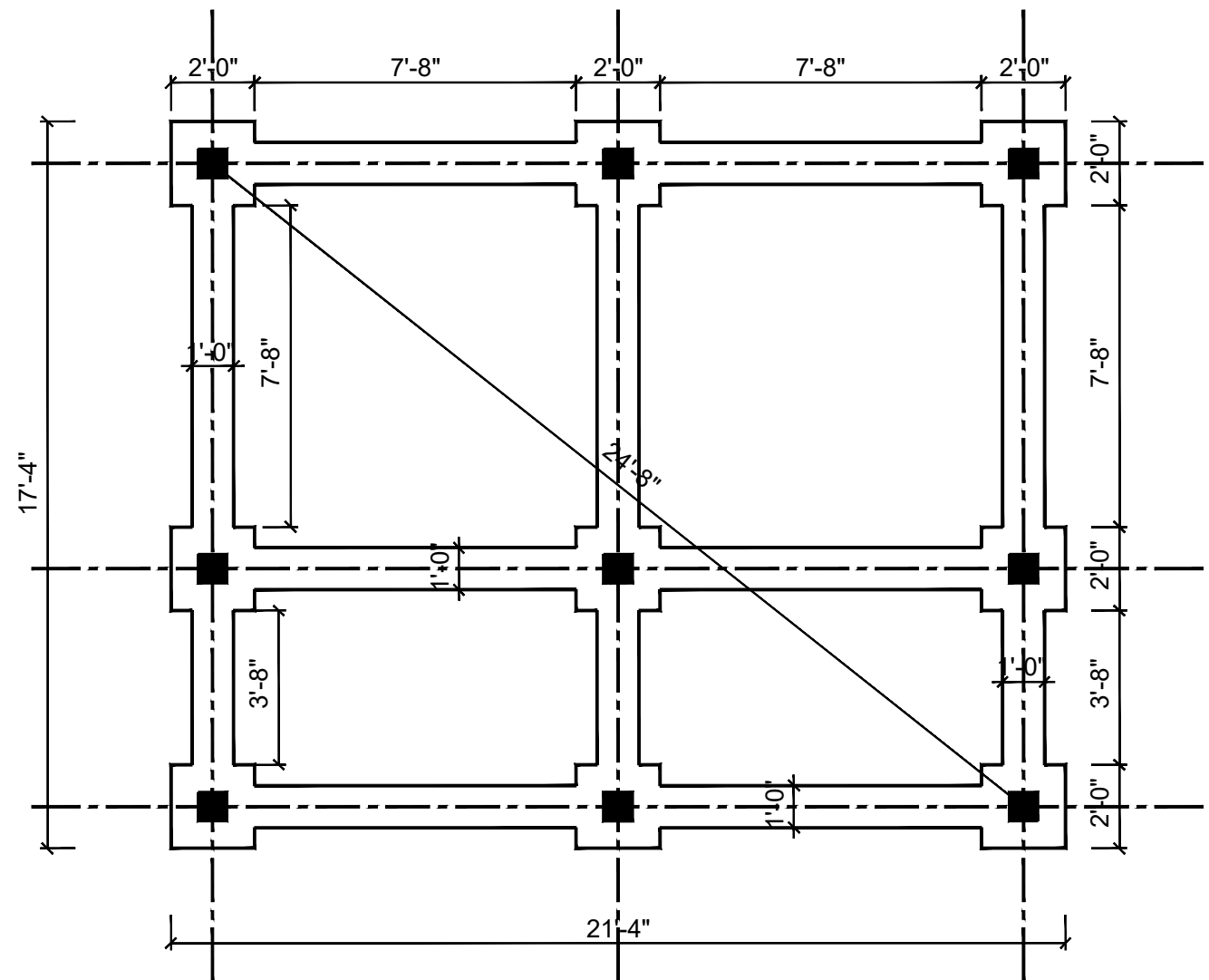
S.N	DESCRIPTION OF ITEM	Unit	Quantity	Rate	Amount	In words	Remark
A.	CIVIL WORKS						
1	EARTHWORK IN EXCAVATION						
	Earthwork in excavation in ordinary soil/medium rock by using Manual means (without blasting) including disposal of excavated earth, lead upto 50m and lift upto 1.5 m, disposed earth to be levelled and neatly dressed.	Cum	52.43				
2	BOULDER SOLING		-				
	Providing and laying uncoursed hand packed Dry Rubble Stone soling in foundation, under floor plinth with out any special dressing of stone including filling interstices with suitable quarry waste or stone chips or quarry sand, watering, compacting using appropriate mechanical compaction means with all contractors materials, handling, placing etc. all complete as per drawings, specifications and instruction of the Engineer. The complete item including all lead & lift.	Cum	-				
3	PCC (1:3:6) Works		3.65				
	Providing and laying machine mixed Plain Cement Concrete of nominal mix 1:3:6 (1 cement : 3 sand : 6 coarse aggregate) for leveling course in foundations and under floor of building, etc. in all level with broken stone aggregate of size not more than 25 mm of approved quality including formwork wherever necessary, dewatering, batching, mixing, transporting, placing, compacting, curing, including all lead and lift, etc. all complete as per drawings, specifications and the instructions of the Engineer.	Cum	2.74				
4	PCC FOR PCC WORKS		1.37				
	Providing and laying in position machine mixed and machine vibrated cement concrete of mix 1:1.5:3 (1 cement:1.5 sand: 3 coarse aggregate) M20 grade for reinforced cement concrete work using approved cement with 20 mm graded machine crushed stone aggregate of approved quality in various locations and heights including transportation of concrete to site of placing, compaction, finished to required line and level, protection and curing, etc. all complete as per drawings, specifications and the instructions of the Engineer, including the cost of shuttering and formworks all complete as per drawings, specifications and instructions of the Engineer.	Cum	1.94				
5	STEEL REINFORCEMENT		-				
	Tor/TMT steel reinforcement bar including straightening, cleaning, cutting, binding & fixing in position with annealed tying binding wire as per drawing, design & instruction all complete.	K.G.	25.78				
6	PLUMB CONCRETE WORKS		35.49				
	Providing and laying Plum concrete (Boulder mixed concrete) as per Drawing and Specifications 60% M 15 concrete and 40% boulders/stones (प्लम्ब कंक्रीट गर्ने काम)	Cum	-				
7	FORMWORKS		-				
	Formwork, shuttering, centering with approved materials (wood) for column and beam necessary propping, scaffolding, staging, supporting inclusive of wedging and cutting holes for utilization till the support if fully unyielding net.	Sqm.	2.04				
8	EARTH BACK FILLING		1.54				
	Back filling in foundation , sides of foundation and below plinth level with approved soil obtained from the excavation at site and stacked at site or brought from outside in layer not exceeding 15 cm thick (compacted thickness) including transportation of soil, spreading in required line and level, sprinkling water, ramming, compacting with mechanical rammers, testing, etc., all complete as per drawing, specification and instructions of the Engineer.	Cum.	0.77				
9	ROOFING WORKS		1.09				
9.1	Coloured C. G. I sheet roofing works with supply of materials complete. (0.28mm, 28 Gauge Medium)	Sqm.	-				
9.2	Coloured C. G. I sheet ridge cover works with supply of materials complete. (2' Wide, 32 Gauge) all complete works	RM	12.38				
9.3	Supply, laying, fitting of MILD STEEL (SHS) SQUARE STEEL HOLLOW PIPE with all complete works. For columns, Web Runners, Purlin & Rafters etc.	K.G.	17.81				
9.4	Supply, Delivery and fixing, fitting of G.I Plain Sheet 3'x6' (22 gauge) in two side triangular part complete works with the instruction of Engineer.	Sqm.	-				
10	DOOR AND WINDOW WORKS		-				

S.N	DESCRIPTION OF ITEM	Unit	Quantity	Rate	Amount	In words	Remark
10.1	Supply, delivery and fixing, fitting of Local Hard Wood Chaukhat as per Drawing and Specifications with the instruction of Engineer	Cum	2.92				
10.2	Supply, Delivery and fixing, fitting of 12mm thick Waterproof Plywood panel in Door and Windows with handles, hinges, all complete works with the instruction of Engineer.	Sqm.	1.30				
11	BAMBOO WALL (बाँसको टाँटी) WORKS		0.65				
11.1	Supply and Delivery of fresh Bamboo(full size) in the Site all complete works	Nos.(घना)	1.65				
11.2	Supplying, Cutting, Making, fitting and fixing of BAMBOO WALLS (बाँसको टाँटि) all complete works including necessary frames for window and door openings as per instruction of Engineers	Sqm.	1.26				
				Sub Total (A)	-		
				VAT 13%	-		
				Total	-		

Support HHS To Construct Transitional Shelter in Collaboration with Jhapa Municipality



PRO. GROUND FLOOR PLAN
Area: 320 sq.ft



Excavation Plan

